

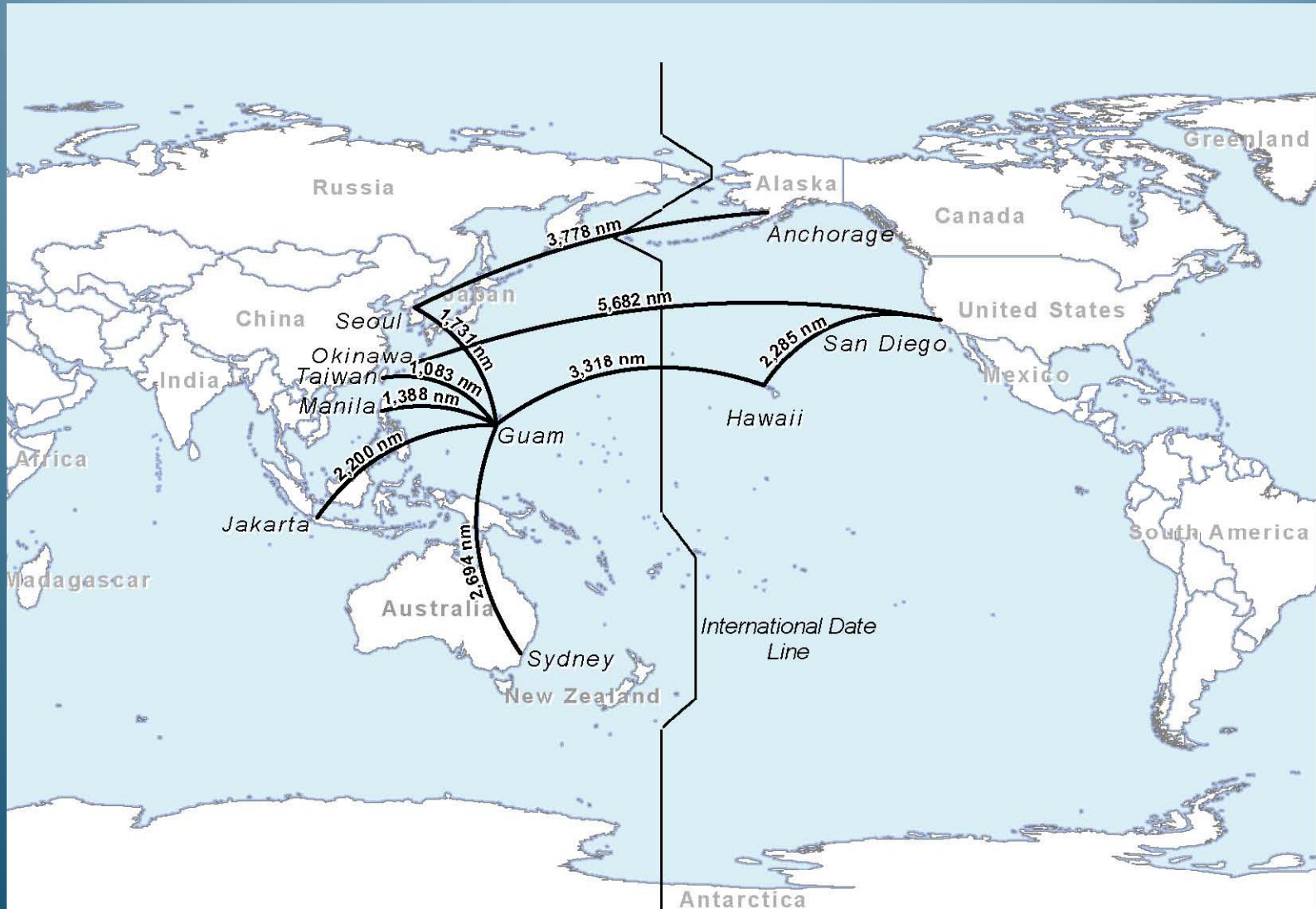
# Draft Environmental Impact Statement Guam and CNMI Military Relocation

## Summary of Proposed Action and Impacts

Colonel Paul Pond, U.S. Marine Corps  
Chief of Staff, Joint Guam Program Office

# Components of Proposed Action

- Relocate Marines from Okinawa to Guam
  - Approximately 8,600 men and women and their families
- Build facilities at Apra Harbor to support visiting aircraft carriers
- Place a U.S. Army air and missile defense task force on Guam
  - Additional 630 service men and women and their families would permanently relocate to Guam



# What is the purpose of this EIS?

- An EIS is a study that identifies
  - Impacts on the natural environment
    - Plants
    - Animals
    - Water
  - Impacts to the human environment
    - Utilities
    - Local economy
- An EIS is required under the National Environmental Policy Act
  - Inform decision-makers of environmental consequences
  - Provide alternatives and support better decision making

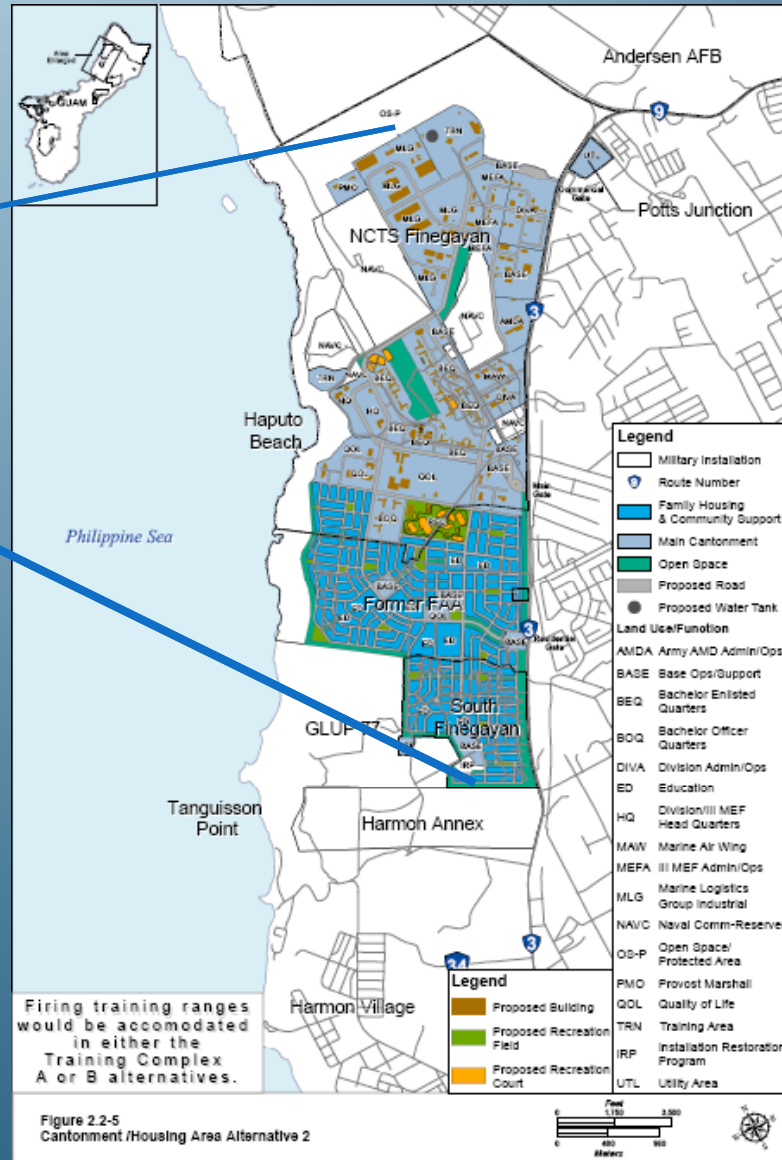
# Public Involvement

- Open house public scoping meetings were held in 2007
- Public Comment Period: November 20, 2009 – February 17, 2010
- All of the comments that we receive during this 90-day period will be considered

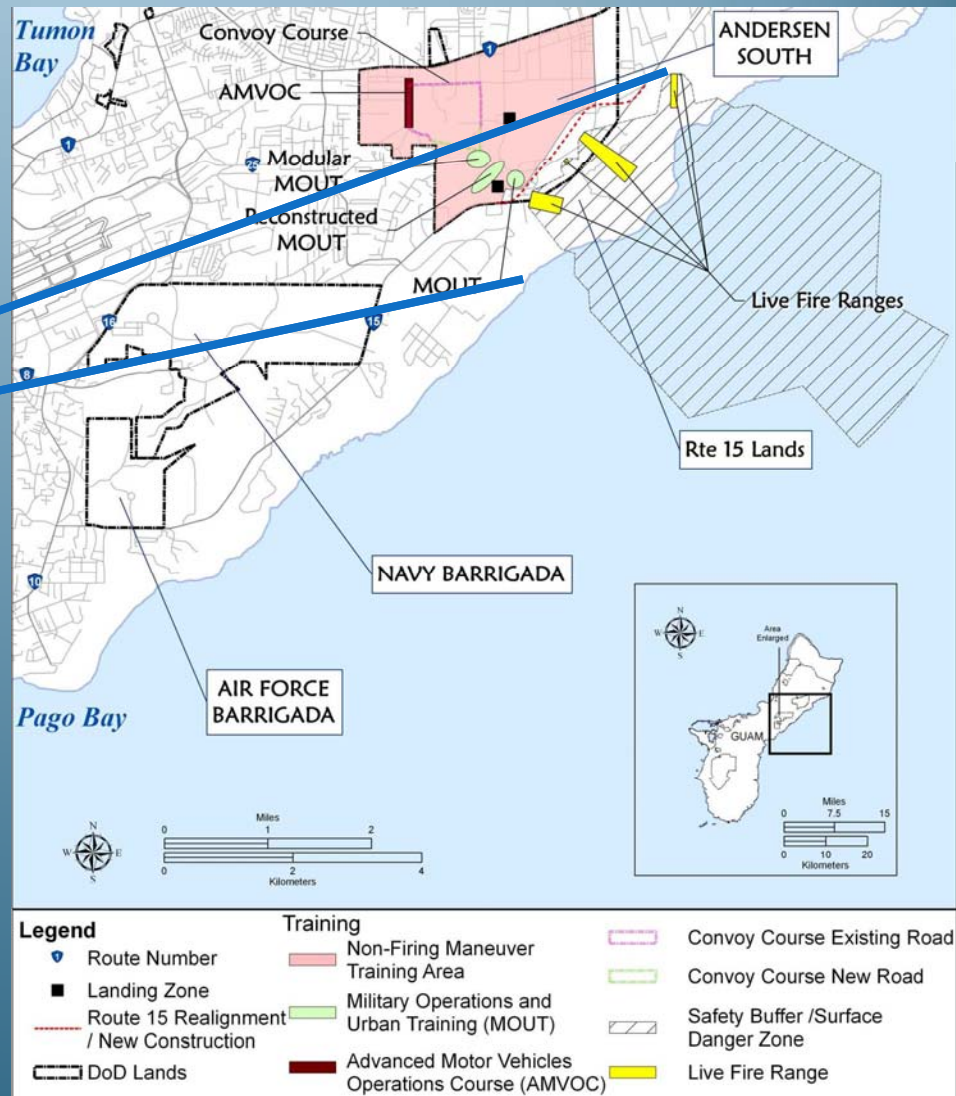
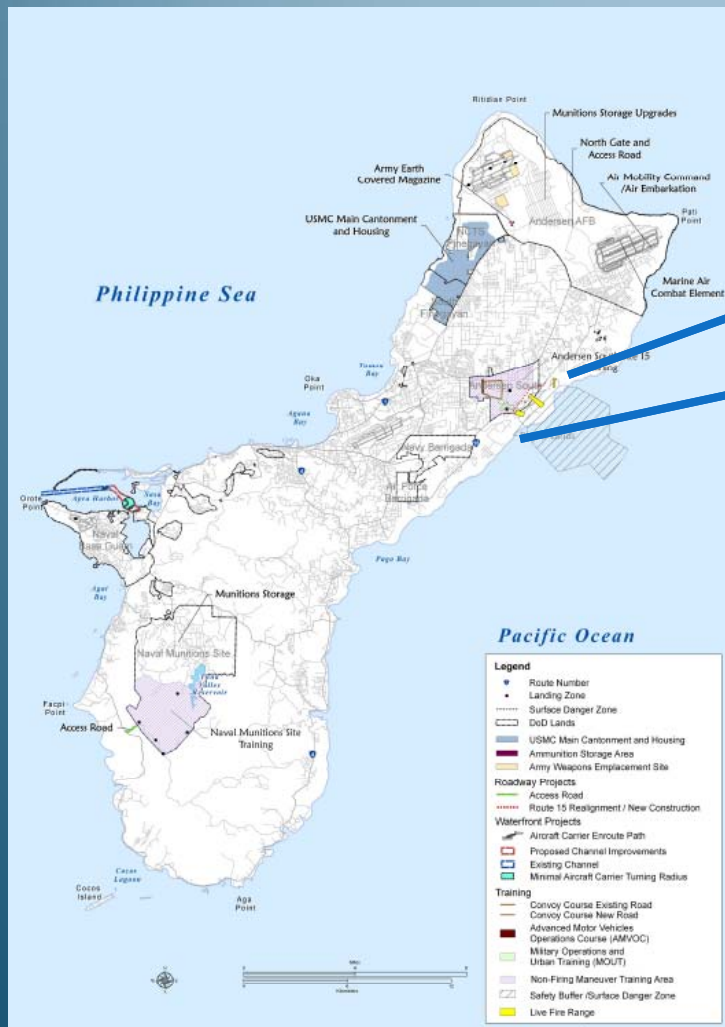




# Main Cantonment Area



# Live-Fire Training: Guam

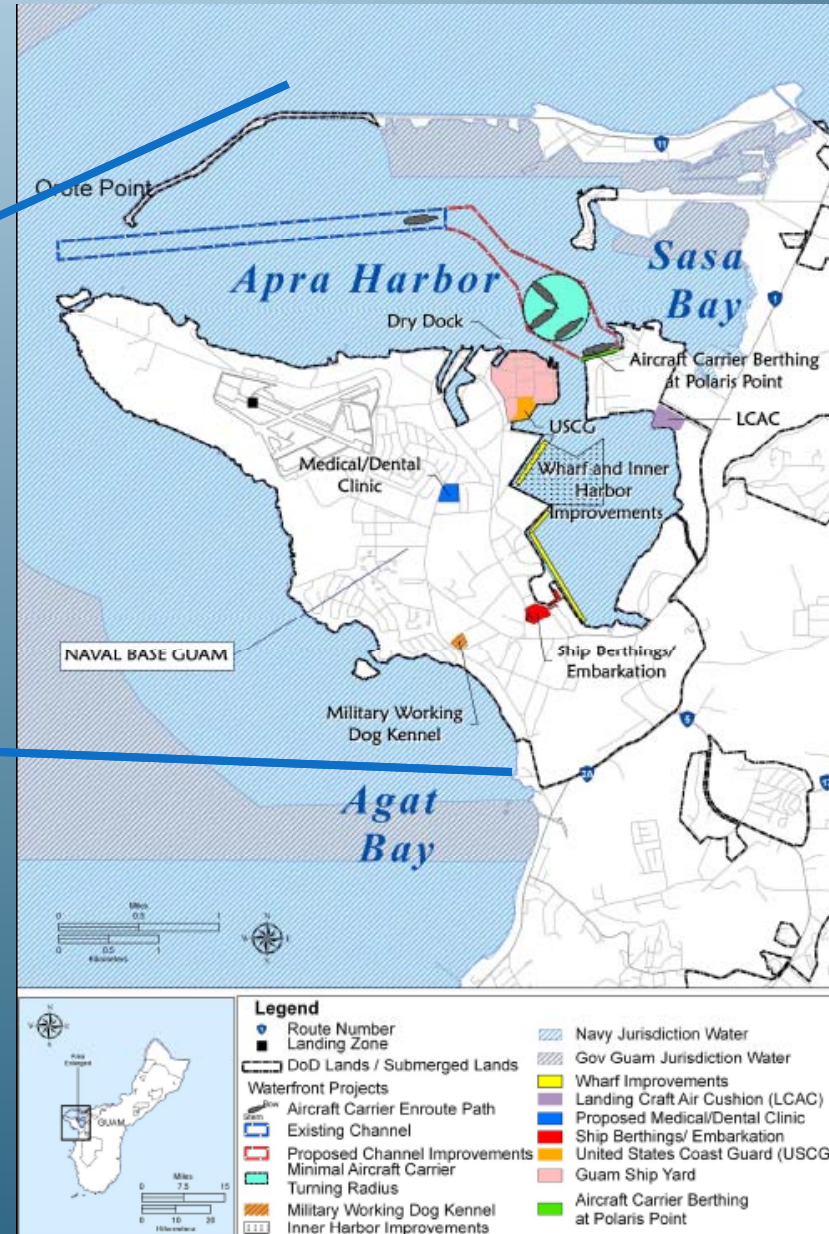


# Live-Fire Training: Tinian





# Apra Harbor

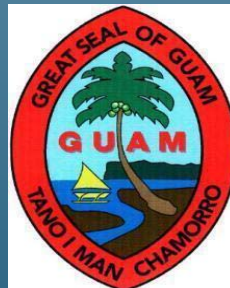


# Army Air and Missile Defense Task Force

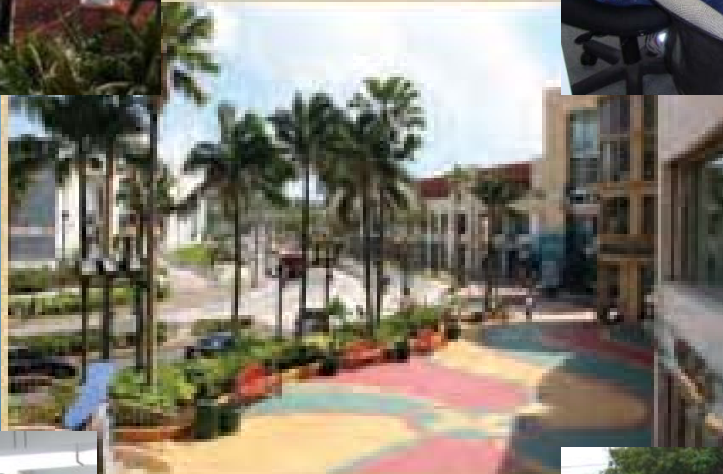


# Draft Environmental Impact Statement

- Identified positive and negative impacts
- Working to minimize negative impacts









# Land Use

- Maximize use of Department of Defense and federal lands as much as possible
- Engage in ongoing, informal discussions
  - Governor of Guam
  - Guam Legislature
  - Potentially affected private citizens
- Share Guam's desire to negotiate in good faith
  - All federal laws and regulations related to land acquisition will be followed

# Positive Impacts to Guam

- Improvements to roadways, bridges, and intersections
- Improvements to Guam's utility infrastructure through upgrades
  - Water
  - Wastewater
  - Electrical power facilities and distribution lines

# Biological Impacts

- Minimize habitat loss
- Protect remaining habitat for threatened and endangered species
- Dredging of Apra Harbor will require removal of coral
  - Locate in area that requires least amount of coral removal
  - Working with federal agencies to compensate for coral loss



Comment here tonight  
or  
write to:

JGPO c/o NAVFAC Pacific  
258 Makalapa Drive, Suite 100  
Pearl Harbor, HI 96860-3134  
Attention: GPMO

---

Written comments must be postmarked no later than:  
Midnight  
February 17, 2010  
(Eastern Standard Time)

You can also comment online at the website:  
[www.guambuildupeis.us](http://www.guambuildupeis.us)